



SUIC/Beneway Holdings Group

**Global Franchising,
AI & Fintech Supply Chain Integration**

**Pre-IPO
Presentation
2024**



Safe Harbor Statement

Certain the information set forth herein contains "forward-looking information", including "future-oriented financial information"; and "financial outlook" under applicable securities laws (collectively referred to herein as forward-looking statements). Except for statements of historical fact, the information contained herein constitutes forward-looking statements and includes, but is not limited to, the (i) projected financial performance of the Company; (ii) completion of, and the use of proceeds from, the sale of shares being offered hereunder; (iii) the expected development of the Company's business, projects, and joint ventures; (iv) execution of the Company's vision and growth strategy, including with respect to future M&A activity and global growth; (v) sources and availability of third-party financing for the Company's projects; (vi) completion of the Company's projects that are currently underway, in development, or otherwise under consideration; (vi) renewal of the Company's current agreements; and (vii) future liquidity, working capital, and capital requirements. Forward-looking statements are provided to allow potential investors the opportunity to understand management's beliefs and opinions in respect of the future so that they may use such beliefs and opinions as one factor in evaluating an investment.

These statements are not guarantees of future performance and undue reliance should not be placed on them. Such forward-looking statements necessarily involve known and unknown risks and uncertainties, which may cause actual performance and financial results in future periods to differ materially from any projections of future performance or result expressed or implied by such forward-looking statements.

Although forward-looking statements contained herein are based upon what management of the Company believes are reasonable assumptions, there can be no assurance that forward-looking statements will prove to be accurate, as actual results and future events could differ materially from those anticipated in such statements. The Company undertakes no obligation to update forward-looking statements if circumstances or management's estimates or opinions should change except as required by applicable securities laws. The reader is cautioned not to place undue reliance on forward-looking statements.

SUIC/Beneway Holdings - US HQ

- SUIC/Beneway HQ Are Located in New York, San Francisco. Global Operations Are Located in Taiwan, Malaysia.

*136-20 38th Ave. Unit 3G
Flushing, New York, USA 11314
T: 929-391-2550*

<https://www.sinounitedco.com/>
<https://www.benewaygroup.com/>



01

Investment Highlights



What Makes Us Different...

Global Franchise + AI & Fintech Supply Chain Integration



**Start From Catering,
Food & Beverage**



**Other Industry Franchising
Merger & Acquisition**



**Supplier to Merchant
Online to Offline**

Current & Future Exponential Growth Potential



Why INVESTORS Should Be EXCITED

Attractive & Revolutionary Business Model

- Bridges the gap between SME's & large corporations & financiers, constructing a comprehensive, integrated supply-chain network that serves as the engine for powering the aggregate financial + technological growth, utilization, and success

Innovative AI, Big Data & Fintech Products

- Companies benefit from an extensive inventory of AI & fintech applications (e.g., unified procurement processes, cross-sector industrial resourcing) to increase financial performance (profitability, liquidity) and opportunities for expansion

Winning Market Strategy

- Beneway Starry Project™ aims to generate substantial traffic flow and brand loyalty to Beneway Ecosystem's platform through interactive omni-channel consumer engagement programs to create relationships & positive experiences

Significant Competitive Advantages

- Partnered merchants are able to secure distinctive benefits including multi-source financing capabilities, dedicated IT support and services, participation in cross-industrial supply chain networks, and streamlined procurement processes

Attractive Entry Valuations

- Beneway has received excellent ratings on financial metrics through external certified EV/EBITDA company analyses, particularly with the forecasted equity value, profitability/liquidity ratios, and predicted success of its capital structure

02

**Catering Franchising,
Raw Material Import/Export**



Franchising of Catering Brands

Product Recognition – Yushan Award, Central Kitchen ISO, HACCP certification



Star Chef Pro Central kitchen

The central kitchen with HACCP&ISO22000 dual certification is in charge of a five-star chef, strictly controlling delicious food and food safety



2021 National Yushan Award - Outstanding Enterprise

2021 National Yushan Award - Outstanding Enterprise Leader

2022 National Yushan Award - Best Product

ISO22000 & HACCP雙認證



Development of Room Temp & Frozen Packs

Experience in the development of frozen and room temperature dual-factory packs, leading the industry in challenging process technology and to follow market flavour trends.



Heineken Distribution of Special Channel

Obtain national distribution rights of special chain channels, assist catering stores and international brands in joint marketing to improve overall performance



Joint Procurement of Raw Materials

One-stop production and sales, and joint procurement with members of the chain franchise association to jointly reduce the cost of raw materials.

Five-Star Chefs, R&D Team



Development Director Elton Han

Experience: Executive Chef of Hanbilou, Huashan Guanzhi, Daye Group
Current: 1. Director of Food and Beverage Development of iHart Co.
2. Consultant of TJCA Taiwan International Young Chefs Asso.



R & D Chef He Wenxiu

Experience: Senior Sous Chef of Hanbilou, Huashan Guanzhi, Daye Group
Current: 1. R&D Chef of iHart Co.



R & D Chef Li Wenting

Experience: Wowprimen Group (teppanyaki) Chef, Cloud Central Kitchen, Chef, Factory Supervisor
Current: 1. R&D Chef of iHard Co.



BENEWAY™

Successful Multi-Brands Franchising -

1. Natl Taiwan University of S&T - Campus (8 Brands)
2. New Paradise (11 Brands)
3. Fengshiye Shopping Street (7 Brands)



New Paradise



風獅爺商店街
WIND LION PLAZA



Fengshiye Shopping Street

集團品牌

一鍋小麻辣

Life Kitchen

青花滷

MONGA 艇舫雞排

十二餃

小南國

港式餐廳

台灣台所

花羨冰嵐

陽光實驗室

Night 走夜市

SUNSHINE LAB

11 Brands

集團品牌

一鍋小麻辣

Life Kitchen

風獅爺

牛排

花羨冰嵐

陽光實驗室

SUNSHINE LAB

洗庭私廚

7 Brands

Catering Franchising Brand 1 - One Hot Pot (20 Stores)



一鍋小麻辣

- Songshan first store
- Nangang Wenqing Store
- Neihu Citylink Store
- Sanzhi Takeaway Shop
- Zhonglun RT-Mart Store
- Penghu store
- Mansion N.T. U. Store
- Keelung Haidian
- Daan Taike U. Store
- Yilan Jiaoxi Store
- Taichung Xitun Store
- Hualien New Paradise
- Kinmen Fengshiu Store

現有店家

31 years of chef experience, reducing meal preparation time to create the best taste

The exclusive ceramic pots imported from Japan maintains the best palatable temperature for a long time.



Catering Franchising Brand 2 –

MONGA Fried Chicken Steak (90 Stores in 10 countries)

Taiwan: 65 Stores

China: 6 Cities

HK/Macau: 4 Stores

Canada: 3 Stores

England: 3 Stores

Malaysia: 12 Stores

Philippines: 3 Stores

Singapore: 3 Stores

Indonesia: 1 Stores

Italy: 1 Stores

+ US & Other Countries



Taiwan , Kaohsiung



Canada, Toroto



England, London



Malaysia, Kuala Lumpur



Philippines, SM NORTH EDSA



Singapore

Other Franchising Brands 3 – (M&A or JV in Talk)



Import & Export US/Asia Raw Material Supply Chain Vertical Integration

**American USDA Official List Raw
Material Supplier, Safe & Reliable**

USDA

Chicken:



Beef: US Brand: American Choice,
Agriculture Products: Blueberry,
Soy Bean, Corn

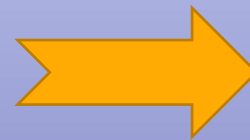
Wine Products: Red Wine, White
Wine and all kinds

iHart Co.

1. Taiwan Chamber of Commerce, Industry, Franchise Asso. & Other Extensive Network.
2. China's Hon Hai's Channels & Other Widely Used Channels
3. Self-owned warehouse, freezer, logistics



**SUIC/Beneway
Fund/Supply Chain Finance**



**Monthly export to Asia can
reach 5-50 containers**



**Integrate Asian Restaurant Asso,
Franchise Asso & Restaurants,...**



**Integrate Asian wholesale
& retail channels**



CAVA, & Chipotle Comparison:

By service, Number of Restaurants, Marketing, Supply Chain Finance & High Tech

Category	CAVA Mediterranean Chain Restaurant	Chipotle Mexican Grill Chain Restaurant	Beneway IPO
Market Cap	\$4.8 Billion	\$64 Billion	\$1.5 Billion (EST)
Number of Restaurants	327	3200	750 (EST)
Service	Chain Restaurant	Chain Restaurant	Chain + Bulk Goods +3D AI Sales Channel + Supply Chain Finance + Fintech +AI
P/E	The company is still losing money	58	30
3D, AI Sales Channels & Starry Project Mkting	No	No	Yes
Supply Chain Finance Products	No	No	Yes
Bulk Good Supply + Supply Chain Integration	No	No	Yes
AI & Fintech Platform	No	No	Yes

03

Marketing Strategy }
3D & AI Sales Channels {

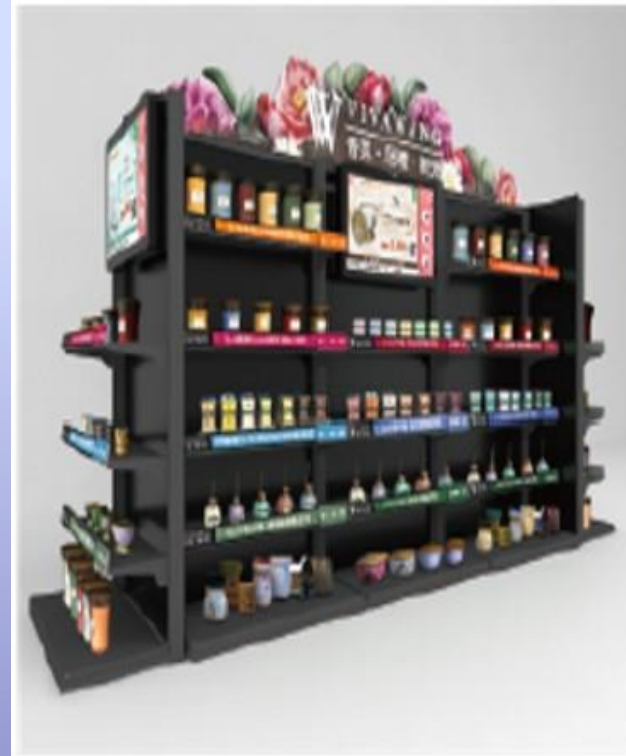
I. Customized Patented AI Smart Shops



AI Smart Shop Model I



AI Smart Shop Model II



AI Smart Shop Model III



AI Smart Shop Model IV

II. 3D LED Billboard – 70% Mkt Shares

Promoting: SKII, Dior, Samsung and more



III. 3D LED Fleets



3D LED Fleet



3D LED Bus

04

AI & Fintech
Supply Chain Integration



Fintech Subsidiary Introduction – Boom FinTech Inc.

Front End
Payment Solutions

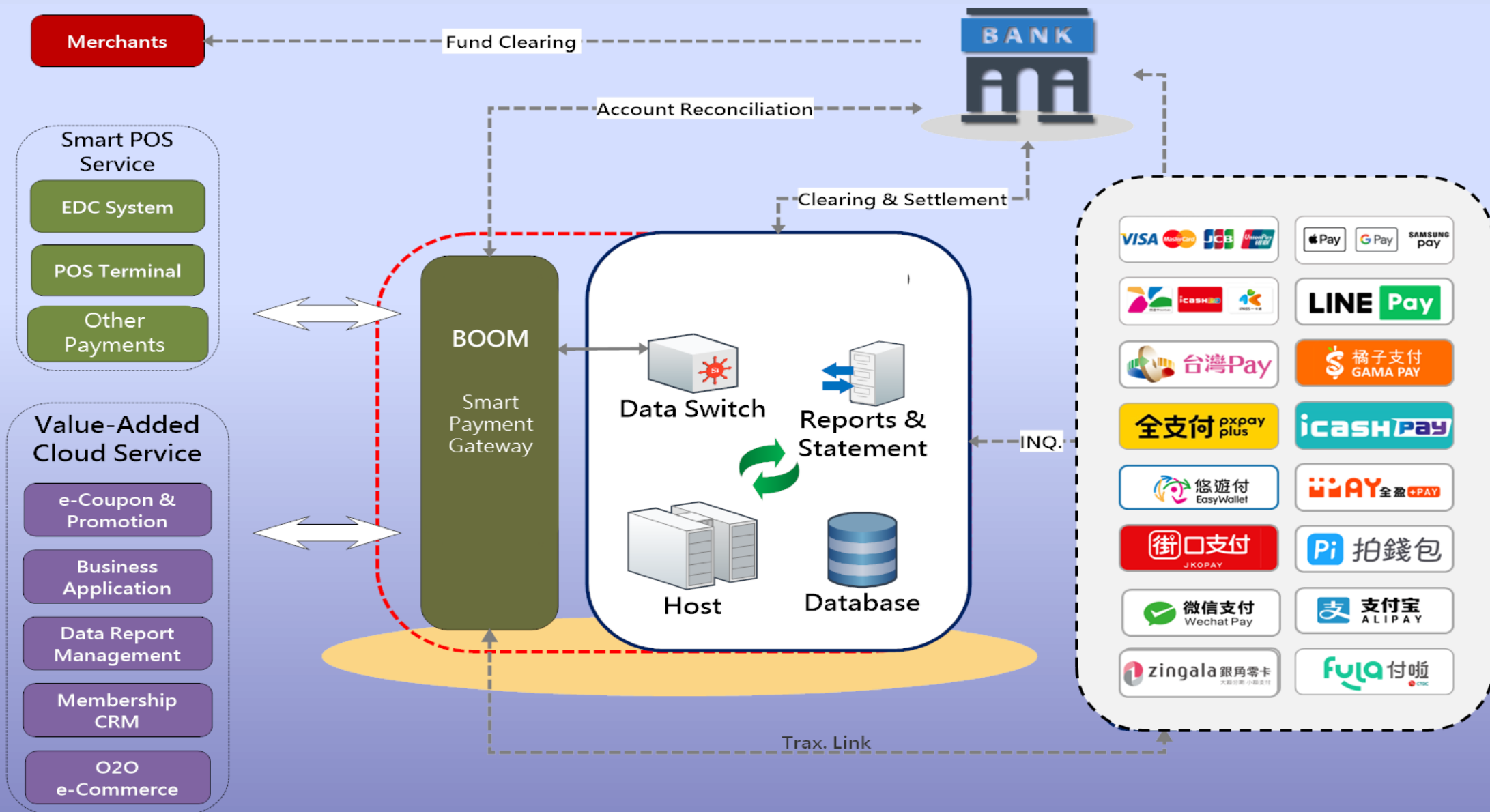
Payment
Gateway

Cloud APP
Platform

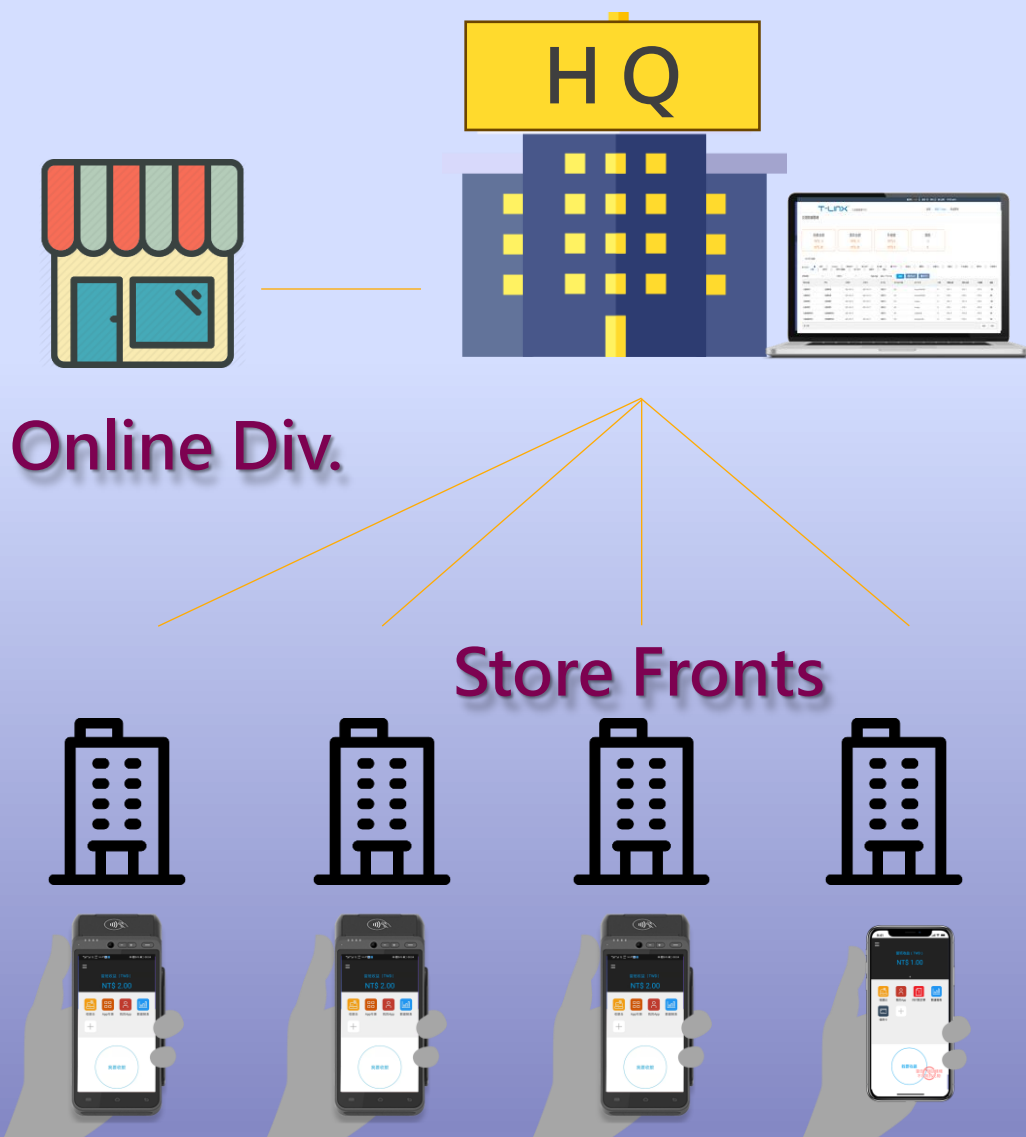
Established in 2016, Boom FinTech Inc. focuses on providing total solutions for merchants of all kinds. Based on our IP protected , modularized payment gateway, we are capable of consolidating various services such as POS, membership, coupons, electronic receipts and more, on top of the main integrated payment functions. Merchants can use our fully integrated system or just the functions they need, and all comes with our highly praised back-end management center that provides integrated financial/accounting statements.

Boom is now providing this flexible service to thousands of merchants in Taiwan, in both retail and online spaces. We are now connecting this PG to more service providers for clients with specific needs.

B2C System Structure



Multiple Level Management System



- Advanced consolidated digital service platform, including payments, marketing, finance data and more.
- ONE system with different permission access for setting and managing data and numbers.
- Cloud based solution – Everything is real time synced
- Flexible front end solutions
- ONE terminal that provides all the latest services
- FULL integrated payment options
- Real time data monitoring



9 Fintech Patents – 5 Applied Products Has Generated 140 Mil USD Transactions

5 Patents Applied in Products

4 Patents Not in Commercial Use



Successful Phase I B2C

Front End Solutions



Vending Machine



Android EDC Terminals



E-commerce



POS

Cloud Application



CRM



E-Invoice



Data report



Payment Integration



Phase I B2C: All In One Products - Android Terminal, Mobil Phone APP, POS, E-Commerce & ... Annual Transaction over 140 Million USD...



ALL IN ONE
Android Terminal



Casher Mobil Phone
App



POS System/E-
Commerce/APP

Phase I B2C Brand Name Clients – Include MARRIOTT, YAMAHA, SHARP, SANYANG.....



Phase II B2B2C

- Purchase Orders Payment
- Inventory Control
- AI Credit System
- All Types of Financing
 - ◆ Small Business Loans
 - ◆ PO Financing
 - ◆ P2P Platform
 - ◆ Financial Brokerage
- Ecosystem Digital Currency
- Transaction Big Data



● Front-end Solutions



● Payment Integration



● Cloud Applications



AI & Fintech Financings: Connects Borrowers & Lenders

Borrower



Building strategic partnerships by bridging the various stakeholders in providing a holistic financial delivery ecosystem under one platform to businesses of all sizes



Lender

Payment Service Provider



Digital Currency Exchange

E-Commerce



E-Wallet Holder



Manufacturer / Supplier



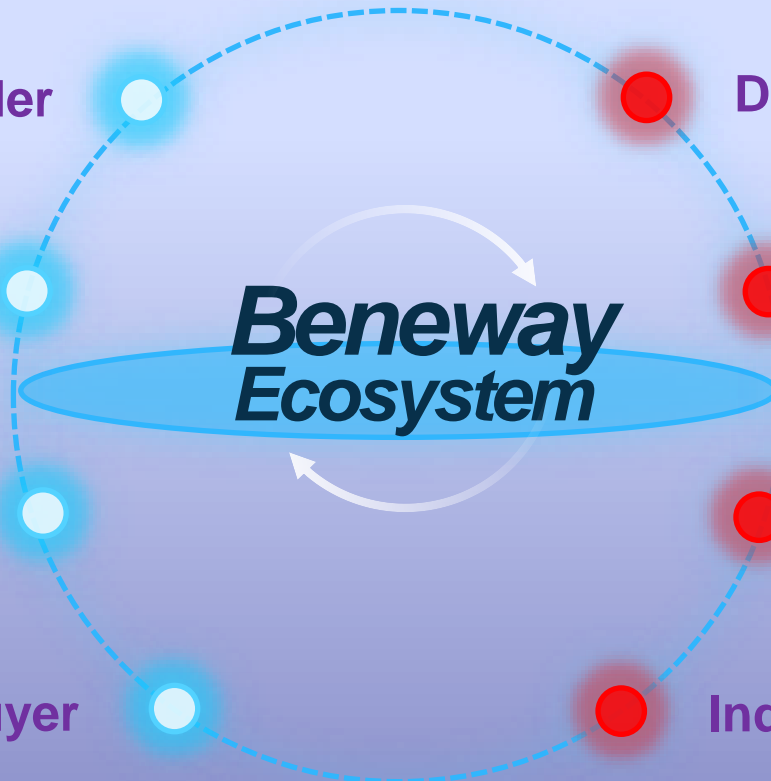
Financial Institution

Merchant / Buyer

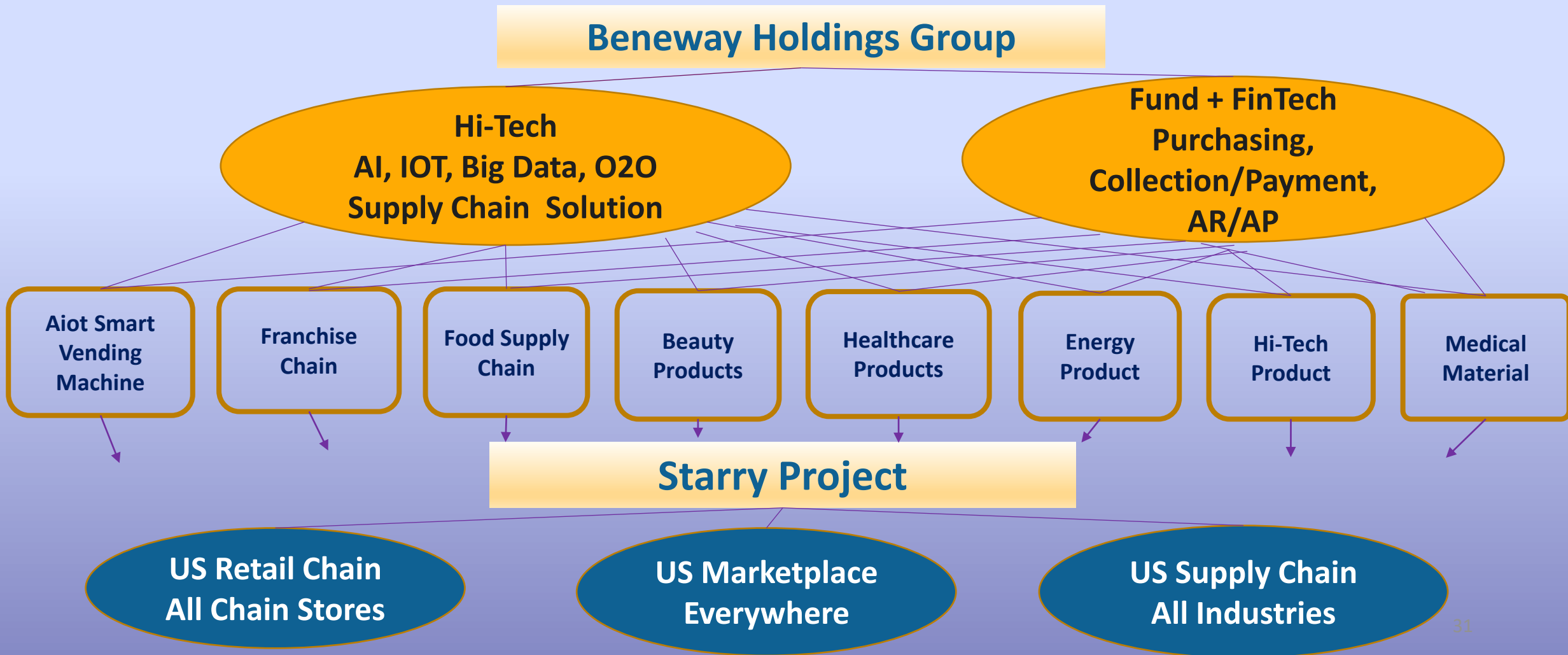


Individual Investor

Digital Borderless Wallets



Supply Chain Integration





Comparison to *Stripe* – Payment Service and API

	Stripe	Beneway
Market Value	\$100 B	xxx
Size of B2B Merchants	200K	140 Mil USD Transactions
Services to Merchants	PSP + API	Franchise, O2O Payment Supply Chain Finance & Fund
On-line & Off-Line Payment	Yes	Yes
Cross Border Money Exchange	Yes	Yes
Fiat Currencies Payment	Yes	Yes
Digital Cross Border Payment	No	Yes
Lending & Borrowing Finance Products	No	Yes
Supply Chain Finance	No	Yes
Supply Chain Fund Vertical Integration	No	Yes

05

**Management Team
& Join Us**



Experience Management Team

CEO Hank Wang

Education: Tamkang University Bachelor of Finance

Experience: 1. Secretary General of Taiwan Quantitative Hedging Development Association
2. CEO of iHart Co.

CFO Elena Lin

Education: Kaohsiung University of Hospitality and Tourism, Institute of Food Culture and Catering Innovation, Master

Experience: 1. CEO of Yuanzi Headquarters (Monga Chicken Chop)
2. 2015 Taiwan Top 100 Managers of the Year

CTO Elton Han

Experience: Executive Chef of Hanbilou, Huashan Guanzhi, Daye Group

Current: 1. Director of Food and Beverage Development of iHart Co.
2. Consultant of TJCA Taiwan International Young Chefs Asso.





Global Franchise, Supply Chain Integration Join Us !!!

Global Franchise, Supply Chain Integration & AI/Fintech Platform

- A.** Our Successful Multi-Brand Business Model Is The First Step Towards Success For Your Franchise!
- B.** From Franchising To Bulk Goods To Supply Chain Finance, Vertical Integration, AI, Fintech...We Meet All Your Needs!
- C.** Beneway's Ecosystem, All Industries & Channels Are Vertically Integrated Through High-Tech, Complement Each Other & Grow Together!

Join Us!

- A.** If You Are Looking For Entrepreneurship, Transformation, Midstream & Upstream Suppliers, Fintech Companies... Join Us, We Provide Overall Solutions To Help You Grow & Create a Win-win Situation!
- B.** If You Are Financial Institution, Fund & Bank, Join Our Fund Pool For Better Returns!
- C.** If You Are An Investor, Join Us Become Our Shareholder, Our Future Return Is At Hand!

THANK YOU

